

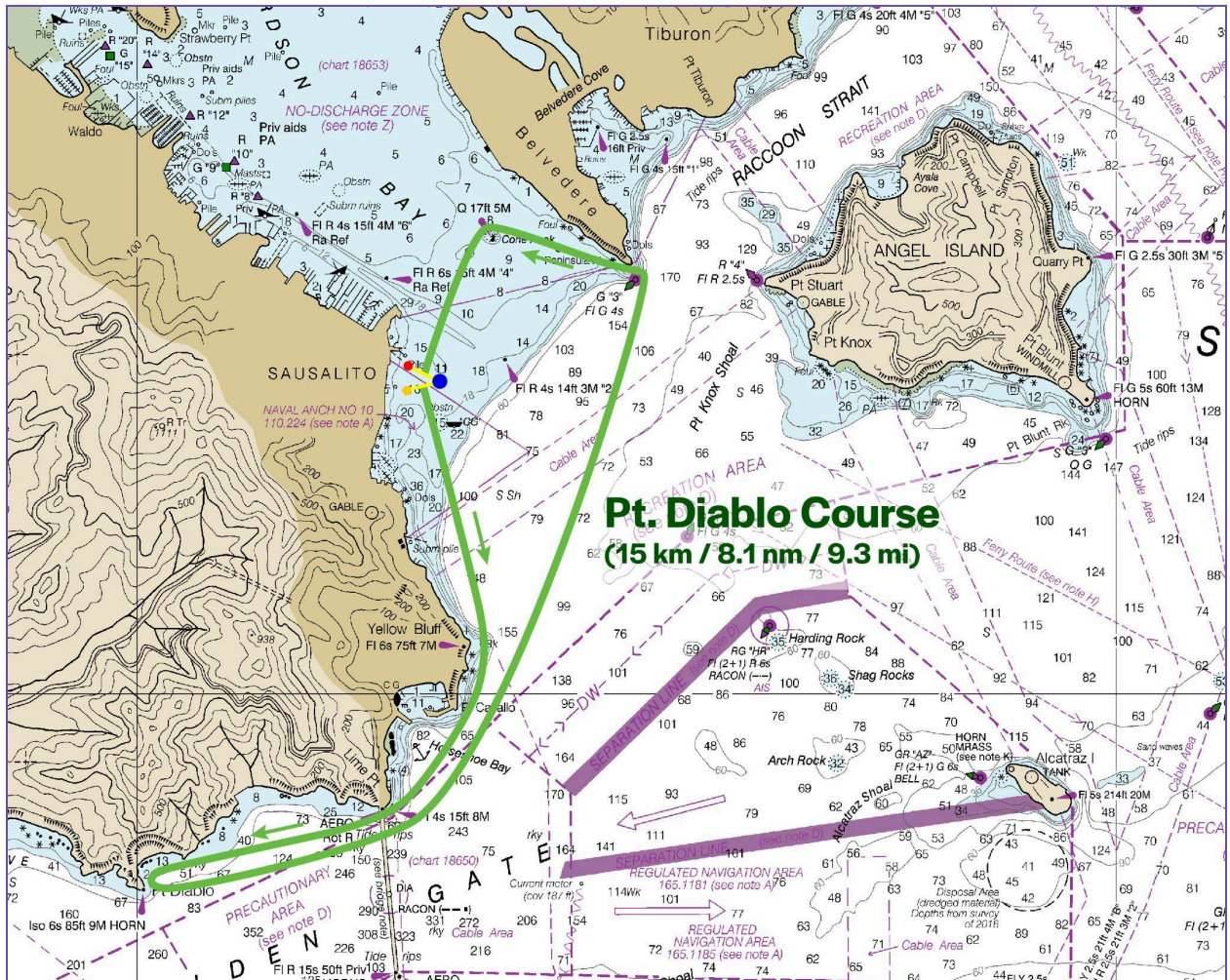


2024 OPEN OCEAN REGATTA

APPENDIX D - Pt. Diablo Course

START 1 • BLUE FLAG • STARTING LINE A • 8:30:00 AM

(Group start with the Endurance Course)



(Course description on the next page.)

THE PT. DIABLO COURSE DESCRIPTION

COURSE STEP	DESCRIPTION	GPS / BEARING
START	Start 1, Blue Flag, Line A, 8:30 AM	Approx. 37° 51.091' N 122° 28.661' W
Leg 1	Head past Yellow Bluff, past Cavallo Pt, out the Golden Gate Bridge past Lime Pt. at the North Tower, along the Marin shore to an inflatable buoy at Pt. Diablo.	
Mark 1 - Pt. Diablo An inflatable buoy.	Round the buoy in a counterclockwise direction, keeping the buoy on the port side of your boat.	Approx. 37° 49.248' N 122° 29.898' W
Leg 2	Head back into the bay under the Golden Gate Bridge, aiming for the Green "3" buoy at Peninsula Pt, at the southern tip of Belvedere Island. .	N. Tower to G"3" ~ 010°M ~ 190°M reciprocal
G"3" at Peninsula Pt.	Round the Green "3" buoy at Peninsula Pt. (southernmost tip of Belvedere Island), in a counterclockwise direction, keeping the buoy on the Port side of your boat.	37° 51.656' N 122° 27.424' W
Leg 3	After rounding G"3", head to Cone Rock.	273°M 093°M reciprocal
Cone Rock A large government marker on top of a big rock.	Round Cone Rock in the counterclockwise direction staying to the east and north of the mark as you round, keeping the rock on the port side of your boat.	37° 51.848' N 122° 28.191' W
Leg 4	From Cone Rock to the Finish Line.	~ 196°M ~ 016°M reciprocal
FINISH	Finish between the race committee boat and the yellow conical buoy.	Approximately 37° 51.091' N 122° 28.661' W