

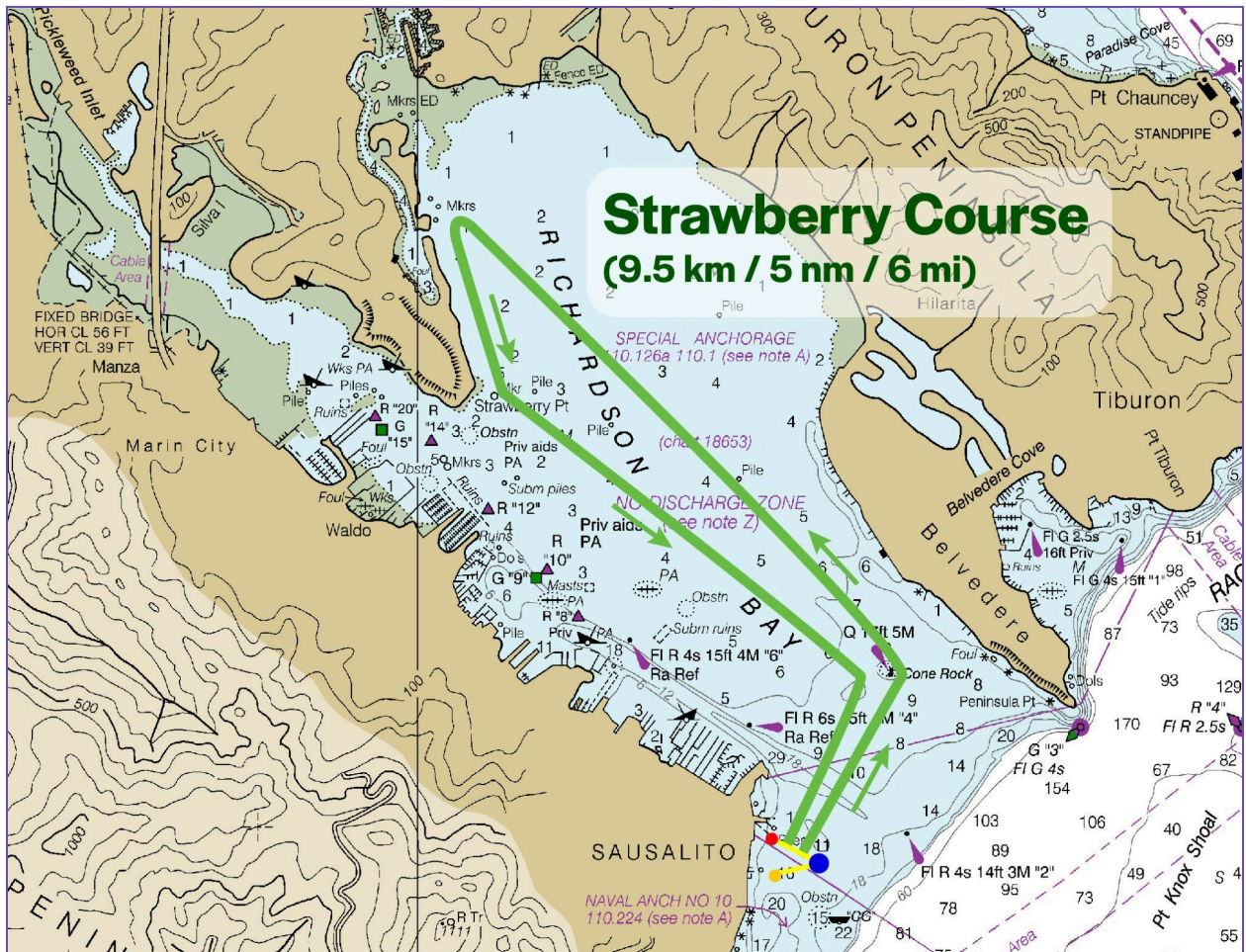


2024 OPEN OCEAN REGATTA

APPENDIX E - Strawberry Course

START 3 • **RED FLAG** • STARTING LINE B • 8:40:00 AM

START 4 • **WHITE FLAG** • STARTING LINE B • 8:45:00 AM



(Class Assignments and Course Description on the following pages.)

CLASS ASSIGNMENTS FOR STARTS 3 AND 4

START 3	RED FLAG	LINE B	8:40:00 AM
Womens Open Water 2x Womens Coastal 2x Womens Flatwater 2x Womens Traditional 2x	Mens Open Water 2x Mens Coastal 2x Mens Flatwater 2x Mens Traditional 2x	Mixed Open Water 2x Mixed Coastal 2x Mixed Flatwater 2x Mixed Traditional 2x Mixed Flatwater 4x	

START 4	WHITE FLAG	LINE B	8:45:00 AM
Womens 24/Fly (1x) Womens Aero/21 (1x) Womens Coastal 1x Womens Flatwater 1x Womens Traditional 1x Womens SUP12-6 Womens SUP14	Mens 24/Fly (1x) Mens Aero/21 (1x) Mens Coastal 1x Mens Flatwater 1x Mens Traditional 1x Mens SUP12-6 Mens SUP14		

THE STRAWBERRY COURSE DESCRIPTION

COURSE STEP	DESCRIPTION	GPS / BEARING
START	See above.	Approx. 37° 51.091' N 122° 28.661' W
Leg 1	Head to Cone Rock.	~ 018°M ~ 198°M reciprocal
Cone Rock A large government marker on top of a big rock.	Round Cone Rock in the counterclockwise direction staying to the south and east of the mark as you round, keeping the rock on the port side of your boat.	37° 51.848' N 122° 28.191' W
Leg 2	Head northwest to the "14" marker in the Strawberry channel.	300°M 120°M reciprocal
Mark "14"	A piling along the eastern edge of the Strawberry channel that will have a buoy tied to it. Round "14" in the counterclockwise direction, keeping the piling on the port side of your boat. Caution: This is a sharp turn into a narrow channel	37° 53.171'N 122° 29.886'W

COURSE STEP	DESCRIPTION	GPS / BEARING
Leg 3	Head down the Strawberry channel to piling marker "6". Caution: The channel is shallow near shore. Watch for boat traffic.	148°M 328°M reciprocal
Mark "6"	A piling along the eastern edge of the Strawberry channel, at the southernmost part of the channel, that will have a buoy tied to it. Round "6" in the counterclockwise direction, keeping the piling on the port side of your boat.	Approx. 37° 52.691'N 122° 29.705'W
Leg 4	Head back south towards San Francisco, towards an inflatable turning mark that will be set WNW of Cone Rock, staying to the east of the fleet of anchor-out boats.	~115°M ~295°M reciprocal
Inflatable Turning Mark	Round the turning mark in the clockwise direction, keeping the buoy on the starboard side of your boat.	Approx. 37° 51.783'N 122° 28.339'W
Leg 5	From the Inflatable Turning Mark to the Finish Line.	~ 186°M ~ 006°M reciprocal
FINISH	Finish between the race committee boat and the yellow conical buoy.	Approximately 37° 51.091' N 122° 28.661' W