

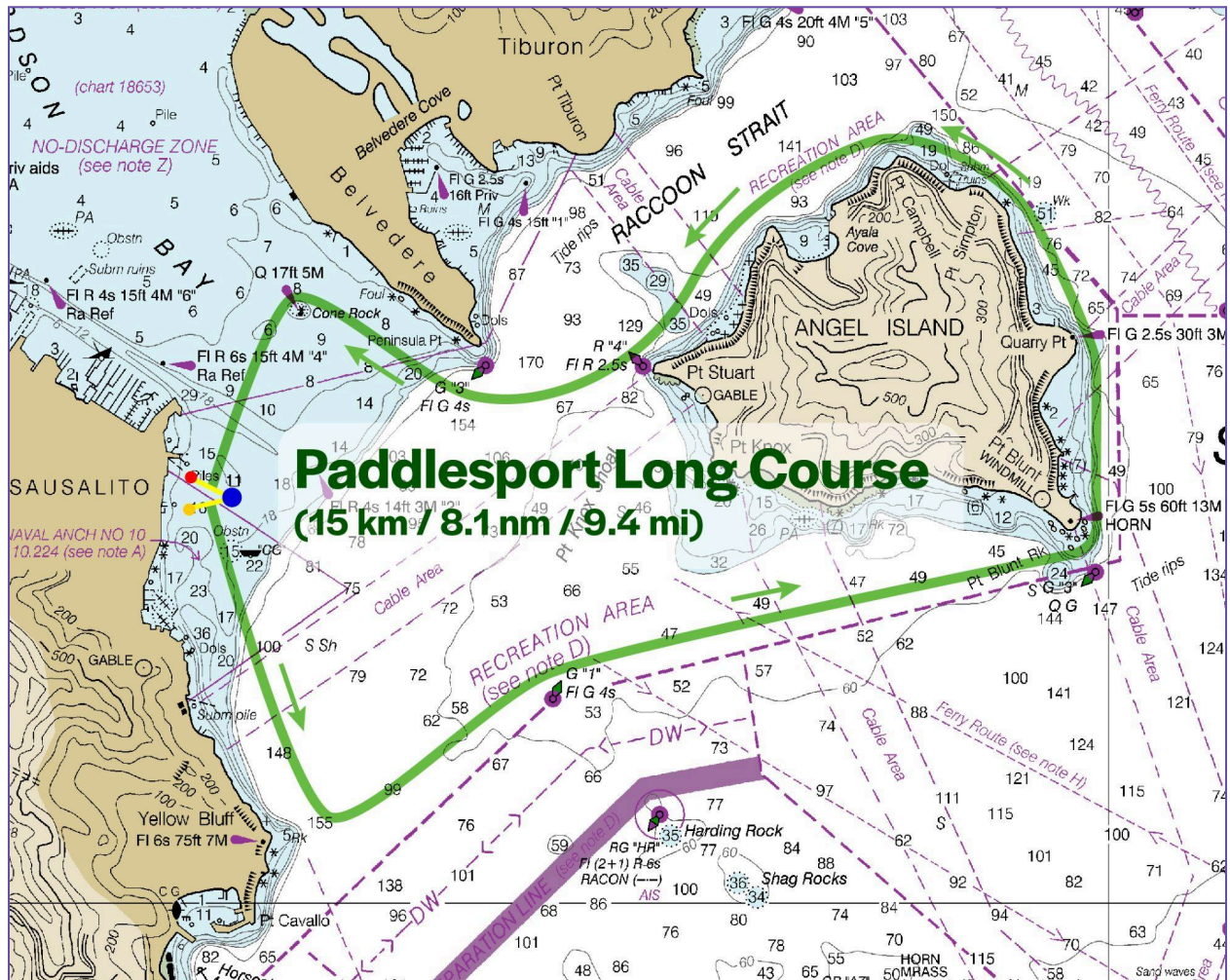


2024 OPEN OCEAN REGATTA

APPENDIX F - Paddlesport Long Course

START 2 • **YELLOW FLAG** • STARTING LINE A • 8:35:00 AM

(Group start with the Sprint Course)



(Course description on the next page.)

THE PADDLESPORT LONG COURSE DESCRIPTION

COURSE STEP	DESCRIPTION	GPS / BEARING
START	Start 2, Yellow Flag, Line A, 8:35 AM	Approx. 37° 51.091' N 122° 28.661' W
Leg 1	Head to the yellow YRA "Hank Easom" permanent can buoy, nearly due east from Yellow Bluff.	~136°M ~316°M reciprocal
Hank Easom Buoy. A big, yellow, permanent yellow can buoy with "Hank Easom" written on the side.	Round the buoy in a counterclockwise direction, keeping the buoy on the port side of your boat.	Approx. 37° 50.491' N 122° 28.078' W
Leg 2	Head to Pt. Blunt at the SE corner of Angel Island.	~60°M ~240°M reciprocal
COURSE REQUIREMENT	Competitors must stay to the north of the Green "1" government buoy half-way between the Hank Easom buoy and Pt. Blunt, almost exactly on the line between the two points. G"1" marks the northern edge of a busy shipping channel.	
Pt. Blunt Rounding	Round Pt. Blunt. Our website has a page all about how best to round Pt. Blunt. You are allowed to pass between the Green "3" buoy at Pt. Blunt and the island.	
Leg 3	Continue up the eastern side of Angel Island to Pt. Campbell.	
Pt. Campbell - CAUTION	The NE corner of Angel Island is called Pt. Campbell. As you round this point, Tiburon will come into view. The morning of the regatta, 200+ small sailboats are going to be towed out to the Berkeley Olympic Circle. We have asked their regatta organizers to keep their tows offshore to give our participants a clear lane close to shore. Please stay close to the Angel Island shore. And please keep an eye out.	
Leg 4 - Raccoon Straight	Head up Raccoon Straight to round Peninsula Pt. (the southernmost tip of Belvedere Island). Caution: The tow of 200+ sailboats will be coming from Belvedere Cove on the side of Raccoon Straight opposite Angel Island, just beyond downtown Tiburon. To avoid	

COURSE STEP	DESCRIPTION	GPS / BEARING
	traffic, we advise that you not cross Racoon Straight until well up the Angel Island shoreline to the west.	
Peninsula Pt.	You will need to round the southernmost tip of Belvedere Island to make it up to Cone Rock in Richardson Bay. There is a Green "3" government buoy. You are allowed to pass between the buoy and shore, or you may round outside the buoy - competitor's option.	
Leg 5	After rounding Peninsula Pt, head to Cone Rock.	273°M 093°M reciprocal
Cone Rock A large government marker on top of a big rock.	Round Cone Rock in the counterclockwise direction staying to the east and north of the mark as you round, keeping the rock on the port side of your boat.	37° 51.848' N 122° 28.191' W
Leg 6	From Cone Rock to the Finish Line.	~ 196°M ~ 016°M reciprocal
FINISH	Finish between the race committee boat and the yellow conical buoy.	Approx. 37° 51.091' N 122° 28.661' W